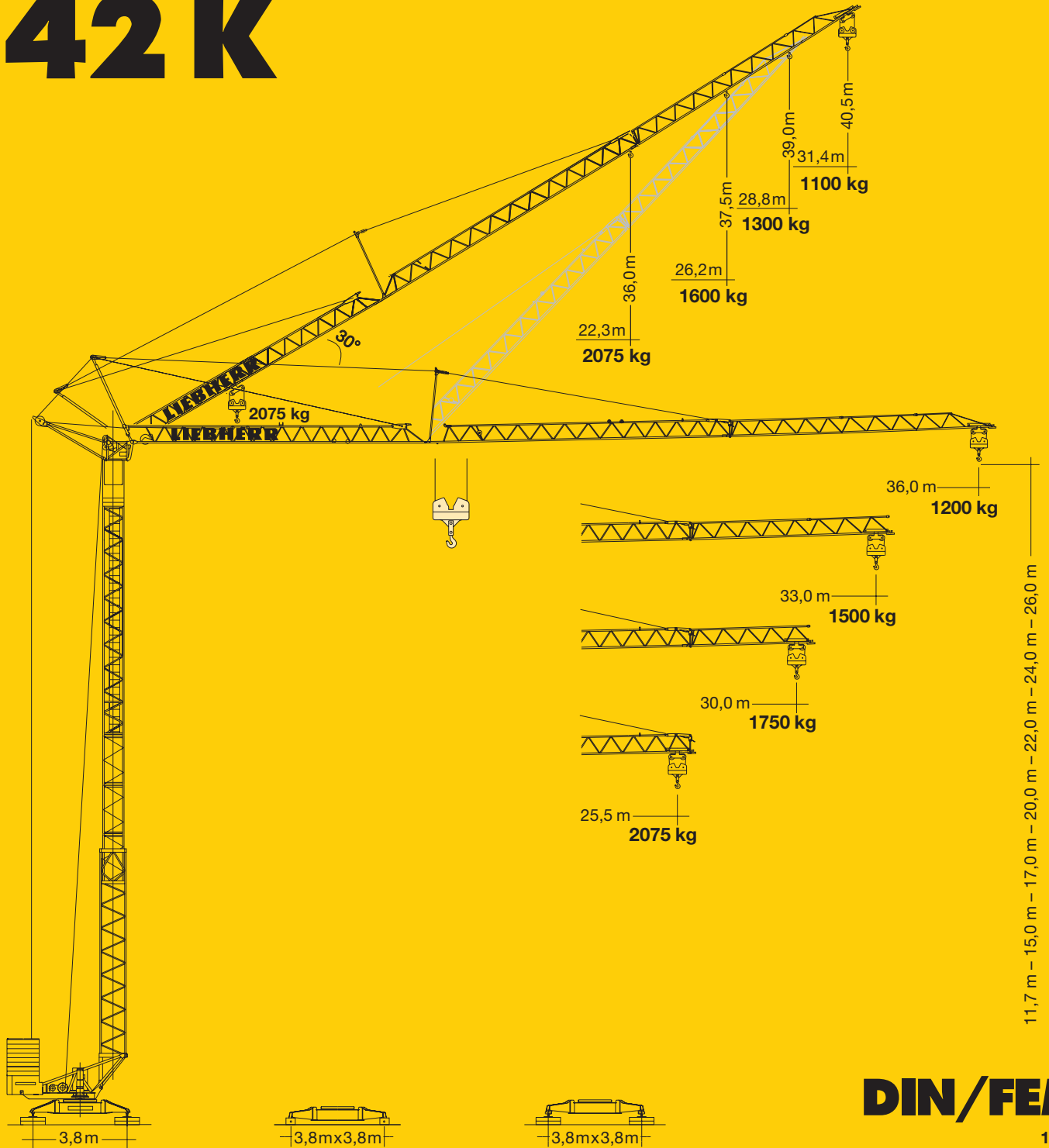


**Tower Crane / Grue à tour / Gru a torre
Grúa torre / Guindaste de torre**

Turmdrehkran 42 K

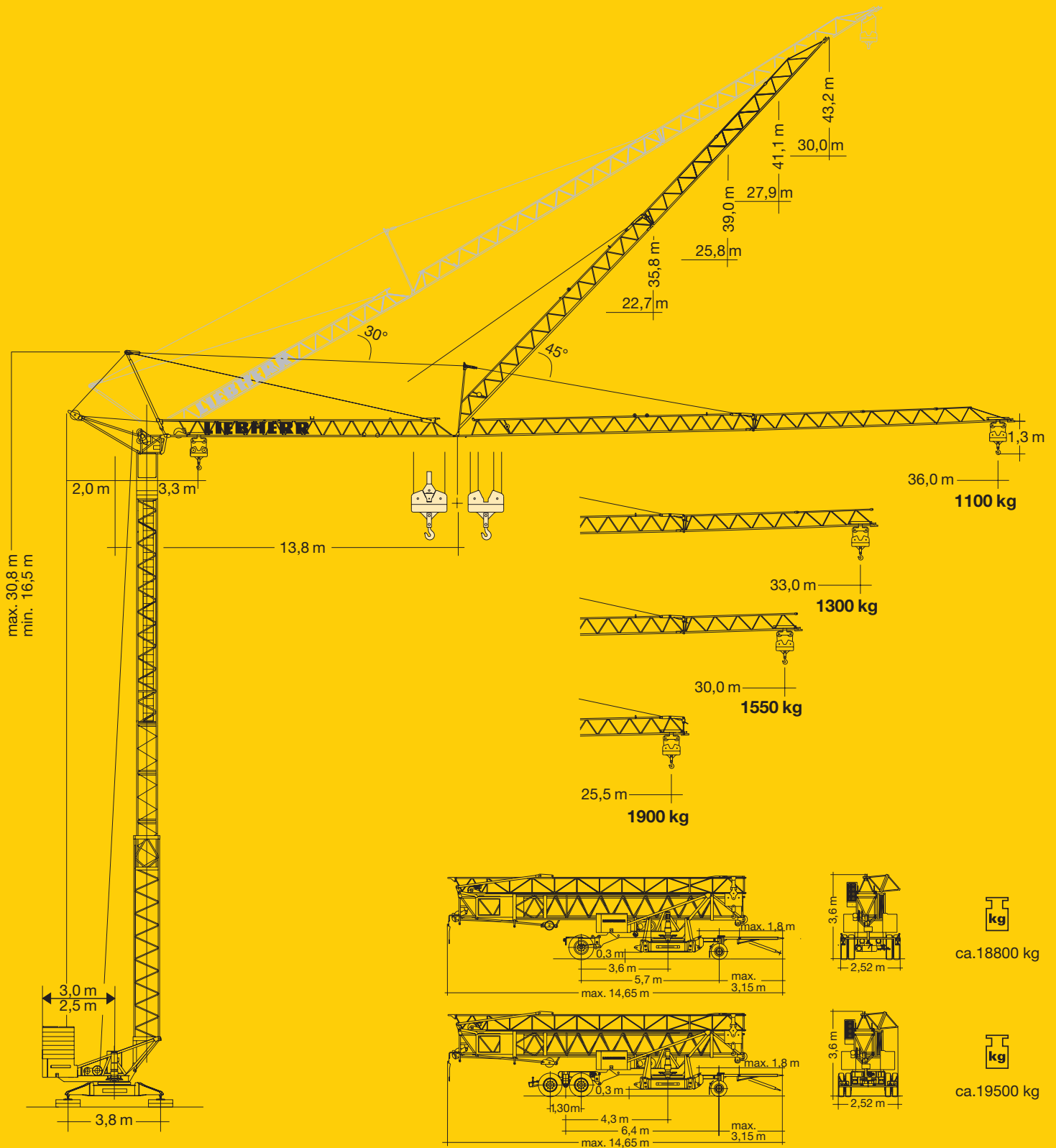


DIN/FEM

1 : 236



CD-1

LIEBHERR



Gewicht

Weight / Poids / Peso / Peso / Pesos

<p>Zentralballast / Central ballast Lest de base / Zavorra centrale Lastro central / Lastre central</p> <p>1400 kg</p> 	<p>$r = 3,0\text{ m}$ 22440 kg $r = 2,5\text{ m}$ 26360 kg</p>	 <p>10960 kg (HH 26 m: + 900 kg)</p>
--	--	---

42 K

Ausladung und Tragfähigkeit

Radius and capacity / Portée et charge / Sbraccio e portata / Alcances y cargas / Alcance e capacidade de carga

m	m/kg	m/kg																							
		20,0	21,0	22,0	23,0	24,9	25,5	26,0	26,5	27,5	28,0	29,5	30,0	31,0	32,9	33,0	34,0	35,0	36,0						
36,0	3,3 – 20,90 2075						2075	2065	1950	1850	1680	1635	1600	1560	1500	1460	1370	1340	1290	1200	1200	1200	1200	1200	1200
33,0	3,3 – 20,95 2075						2075	2070	1960	1860	1690	1640	1600	1570	1500	1500	1500	1500	1500	1500	1500	1500	1500	1500	1500
30,0	3,3 – 21,60 2075						2075	2075	2030	1925	1750	1750	1750	1750	1750	1750	1750	1750	1750	1750	1750	1750	1750	1750	1750
25,5	3,3 – 22,63 2075						2075	2075	2075	2075	2075	2075	2075	2075	2075	2075	2075	2075	2075	2075	2075	2075	2075	2075	2075

m	m/kg	m/kg																						
		11,0	12,0	13,0	14,0	16,0	18,0	20,0	23,6	24,0	25,5	26,0	26,5	27,0	28,0	29,5	30,0	31,0	32,0	33,0	33,5	35,0	36,0	
36,0	3,3 – 20,90 2000	2000	2000	2000	2000	2000	2000	2000	1720	1680	1560	1520	1490	1450	1390	1300	1270	1220	1170	1120	1100	1100	1100	1100
33,0	3,3 – 20,95 2000	2000	2000	2000	2000	2000	2000	2000	1725	1690	1565	1530	1490	1460	1390	1300	1300	1300	1300	1300	1300	1300	1300	1300
30,0	3,3 – 21,60 2000	2000	2000	2000	2000	2000	2000	2000	1790	1755	1630	1590	1550	1550	1550	1550	1550	1550	1550	1550	1550	1550	1550	1550
25,5	3,3 – 22,63 2000	2000	2000	2000	2000	2000	2000	2000	1900	1900	1900	1900	1900	1900	1900	1900	1900	1900	1900	1900	1900	1900	1900	1900

m	m/kg	m/kg																						
		11,0	12,0	13,0	14,0	16,0	18,0	20,0	23,6	24,0	25,5	26,0	26,5	27,0	28,0	29,5	30,0	31,0	32,0	33,0	33,5	35,0	36,0	
36,0	3,3 – 11,99 4000	4000	4000	3610	3290	2790	2410	2200	1880	1840	1705	1665	1625	1590	1520	1420	1390	1330	1280	1230	1210	1140	1100	1100
33,0	3,3 – 12,02 4000	4000	4000	3620	3300	2800	2600	2420	1980	1940	1800	1750	1710	1670	1600	1500	1470	1410	1350	1300	1300	1300	1300	1300
30,0	3,3 – 12,36 4000	4000	4000	3755	3420	3100	2900	2550	2080	2040	1895	1850	1810	1770	1690	1580	1550	1550	1550	1550	1550	1550	1550	1550
25,5	3,3 – 12,90 4000	4000	4000	3960	3800	3360	2910	2560	2090	2050	1900	1900	1900	1900	1900	1900	1900	1900	1900	1900	1900	1900	1900	1900

m	m/kg	Auslegersteilstellung 30° / Elevated jib 30° / Flèche inclinée 30° Braccio inclinato a 30° / Pluma inclinada 30° / Lança inclinada 30°															
		17,0	18,0	19,0	20,0	21,0	22,3	23,0	24,0	25,0	26,2	27,0	28,0	28,8	30,0	31,0	31,4
36,0	3,0 – 16,7 2075	2030	1890	1760	1650	1550	1430	1370	1300	1230	1150	1110	1100	1100	1100	1100	1100
33,0	3,0 – 17,7 2075	2075	2030	1890	1770	1670	1540	1480	1400	1330	1300	1300	1300	1300	1300	1300	1300
30,0	3,0 – 18,2 2075	2075	2075	1970	1840	1730	1600	1600	1600	1600	1600	1600	1600	1600	1600	1600	1600
25,5	3,0 – 19,1 2075	2075	2075	2075	2075	2075	2075	2075	2075	2075	2075	2075	2075	2075	2075	2075	2075

Geschwindigkeiten

Speeds / Vitesse / Velocità / Velocidades / Velocidades

	U/min. 0 ↔ 0,9 sl./min tr./min	3,0 kW, EDC
	20,0 / 40,0 m/min	1,3 / 2,3 kW
	25,0 m/min	2 x 1,3 kW
	0 – 45°, 30 sec.	3,0 kW

Stufe / Step / Cran Marcia / Velocidad Velocidade	kg	m/min
11,0 kW	2075	6,0
	2075	25,0
	1000	50,0
11,0 kW	2000	6,0
	4000	3,0
	2000	25,0
11,0 kW (FU)	4000	12,5
	1000	50,0
	2000	25,0
11,0 kW (FU)	2000	3,0
	4000	1,5
	2000	30,0
	4000	15,0
1500	40,0	20,0
	3000	20,0
1000	55,0	27,5
	2000	27,5

BGL: 2108-0050 2108-0045

400 V	Hz	kVA
63,0 m 4 x 10 mm ² (KL) 4 x 6 mm ² (FU)	50	22,0 (KL) 17,0 (FU)

GD-

Technische Daten

Technical data - Caractéristiques techniques

Caratteristiche tecniche - Características técnicas - Datos técnicos

Aufstellvorgang

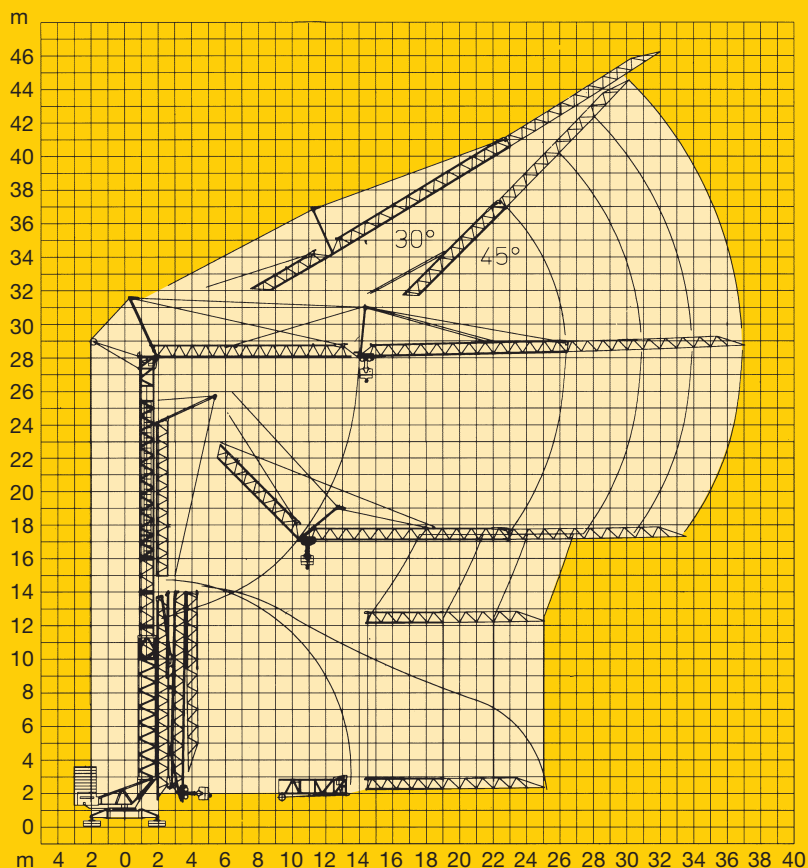
Erection procedure

Déroulement de montage

Procedimento di montaggio

Procedimiento de montaje

Sistema de montagem



Kolli-Liste

Packing List / Liste de colisage / Lista dei colli

Lista de contenido / Lista de embalagem

Pos.	Anz.				L (m)	B (m)	H (m)	kg
1	3	Turmstück / Tower section Elément de mât / Elemento di torre Tramo de torre / Peça de torre			2,10	0,85	0,88	350
2	1	Ausleger-Verlängerung 25,5 m – 30,0 m Jib extension / Rallonge de la flèche Elemento estensione braccio Prolongación de pluma / Extensão da lança			4,70	0,80	0,70	180
3	1	Ausleger-Verlängerung 30,0 m – 33,0 m Jib extension / Rallonge de la flèche Elemento estensione braccio Prolongación de pluma / Extensão da lança			3,10	0,80	0,70	110
4	1	Ausleger-Verlängerung 33,0 m – 36,0 m Jib extension / Rallonge de la flèche Elemento estensione braccio Prolongación de pluma / Extensão da lança			3,10	0,80	0,70	95
5	1	Transportachse vorne Tra 100 KY 2 Road transport axle front / Essieux de transport avant / Asse di trasporto anteriore / Eje delantero para transporte / Eixo de transporte dianteiro			3,00	1,13	0,97	660
6	1	Transportachse hinten Tra 120 GY 1A Road transport axle behind / Essieux de transport arrière / Asse di trasporto posteriore / Eje trasero para transporte / Eixo de transporte traseiro			1,90	2,50	1,05	1150
7	1	Transportachse Tra 200 GZ 3 / Road transport axle Essieux de transport / Assali par trasporto Tra 200 GZ 3 / Eje de transporte Eixo de transporte			3,10	2,50	1,10	2600
8	1	Kiste mit Seilen und Kleinteilen / Case with ropes and small parts Caisse avec câbles et pièces détachées / Cassa con funi e accessori Caja con cables y piezas sueltas / Caixa contendo cabos e acessórios			1,00	0,80	1,00	450

120 P –3739 H1 B3 DIN 15018 •BGL 2108-0050 / FEM (Section 1) Krangruppe A3 und OENORM T3 •03.01 / 6

Konstruktionsänderungen vorbehalten! / Subject to alterations!
Sous réserves de modifications! / Si fa riserva di modifiche!
Salvo modificação da construçao! / ¡Sujeto a modificaciones!

Printed in Germany.

